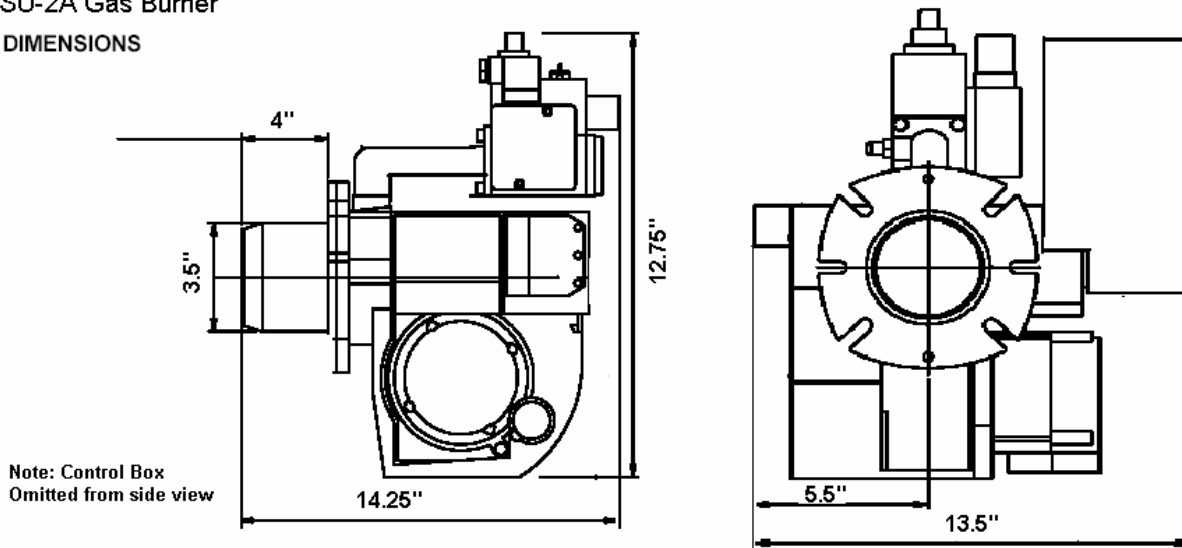





## Residential and Light Commercial Flame Retention Power Gas Burner: SU-2A

Technical Data  
SU-2A Gas Burner

**DIMENSIONS**



NOTE: The above measurements are maximum measurements. Depending on the components used, the measurements may vary.

Burner Model	Tube Length	Fuel	Capacity in BTU/H		Auxiliary Electric Power		Total Amps	Gas Conn.	Weight	Listing
			Min	Max	Primary	Secondary				
SU-2A	4" or 8"	Nat/LP US/ Canada	50,000	250,000	120V 60Hz 1PH	24V	3 or less	½"	31 lbs.	

- The SU-2A is a direct spark, partial pre-mix, flame retention head, power gas burner.
- Available outside air attachment for fresh air and direct vent applications
- Suitable for OEM applications, oil to gas conversions and retrofits.
- Firing rate adjusted by altering gas pressure, head and air settings.
- Available with Honeywell S89F and Fenwal 2466H control
- Honeywell gas valve standard.
- The SU-2A is used in a variety of applications, such as: residential heating, process heating, bakery ovens, smoke houses and incinerators.

Mass. Plbg Board # G1-0903-40:09/03/2004

NYC MEA # 382-03-E

**Heat Wise, Inc.**  
**28 Industrial Blvd, Unit I**  
**Medford NY 11763**  
**P: (631)-345-0447**  
**F: (631)-345-0451**  
[www.heatwise.com](http://www.heatwise.com)